

MONTHLY MEMBERSHIP PROGRESS REPORT

District 322C1

Results as of: 1/31/2025

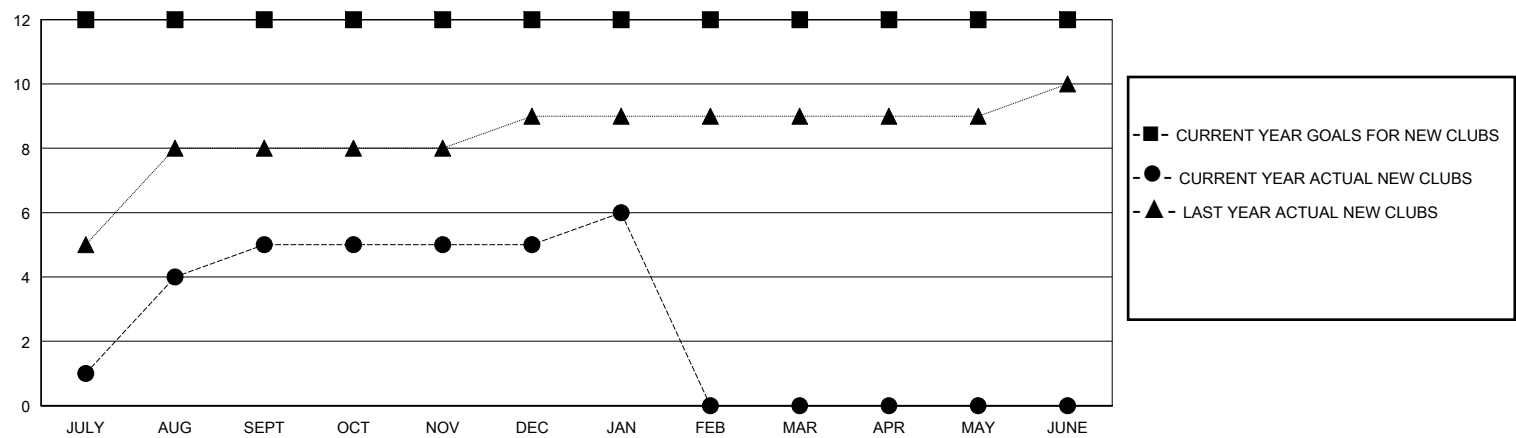
GMT:

LOCATION INDIA

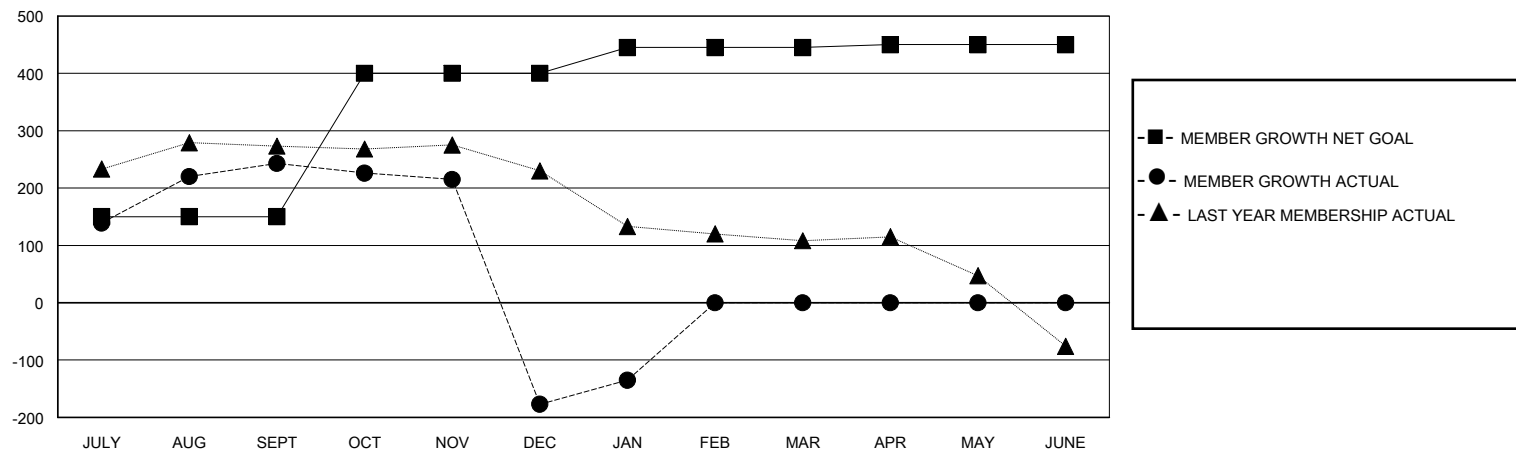
GMT CA

| Clubs                 |               |           |               | Members               |                        |                      |  |
|-----------------------|---------------|-----------|---------------|-----------------------|------------------------|----------------------|--|
| RESULTS FOR 2024-2025 |               |           |               | RESULTS FOR 2024-2025 |                        |                      |  |
| QUARTER               | NEW CLUB GOAL | NEW CLUBS | DROPPED CLUBS | QUARTER               | MEMBER GROWTH NET GOAL | MEMBER GROWTH ACTUAL | DROPPED MEMBERS ACTUAL (including transfers) |
| JULY/AUG/SEPT         | 12            | 5         | 1             | JULY/AUG/SEPT         | 150                    | 324                  | 65   |
| OCT/NOV/DEC           | 0             | 0         | 11            | OCT/NOV/DEC           | 250                    | 64                   | 448  |
| JAN/FEB/MAR           | 0             | 1         | 0             | JAN/FEB/MAR           | 45                     | 68                   | 7  |
| APR/MAY/JUNE          | 0             | 0         | 0             | APR/MAY/JUNE          | 5                      | 0                    | 0  |

GOALS AND ACTUAL NEW CLUBS CUMULATIVE



GOALS AND ACTUAL MEMBERS CUMULATIVE



|                        |     |   |                                   |                |
|------------------------|-----|---|-----------------------------------|----------------|
| DROPPED CLUBS: 12      |     | 72 CLUBS OF 120 ADDED 1 OR MORE NEW MEMBERS               | <u>GENDER DISTRIBUTION</u>        |                |
|                        |     |   | MALE                              | 2,489 (76.28%) |
|                        |     |   | FEMALE                            | 774 (23.72%)   |
| <u>DROPPED MEMBERS</u> |     | <a href="#">CLICK HERE FOR CUMULATIVE MEMBERSHIP DATA</a> |                                   |                |
| DECEASED               | 12  |   | TOTAL FAMILY UNIT MEMBERS 0       |                |
| CLUB CANCELLED         | 248 |   |                                   |                |
| OTHER                  | 260 |   | FAMILY MEMBERS PAYING HALF DUES 0 |                |
| TOTAL                  | 520 |   |                                   |                |